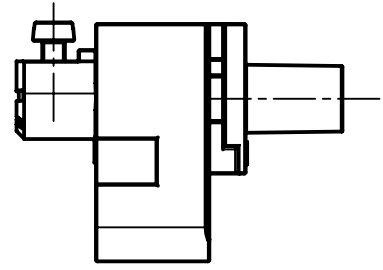


1x male PE adapter

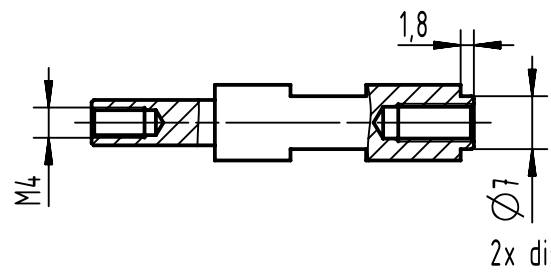


1x female PE adapter

2x M3 screw

2x washer M4

2x M4 screw



2x distance peg

all components enclosed separately

|   |  |                   |                          |                           |  |                        |
|---|--|-------------------|--------------------------|---------------------------|--|------------------------|
|   | All Dimensions in mm<br>Original Size DIN A4 | Scale<br>1:1      | Free size tol.           |                           | Ref.   |                        |
|   | All rights reserved<br>Department EL PD      | Created by<br>HEW | Inspected by<br>DINGB    | Standardisation<br>ROEBEN | Date<br>2022-02-17                                       | State<br>Final Release |
| Title<br>Frame Han 24HPR EasyCon Short PE-Mod-a-h |  |                   |                          |                           | Doc-Key / ECM-Nr.<br>100838731/UGD/001/B<br>500000211516 |                        |
| HARTING<br>D-32339 Espelkamp                      |  | Type<br>TB        | Number<br>09 40 024 9936 |                           | Rev.<br>B  | Page<br>1/1            |