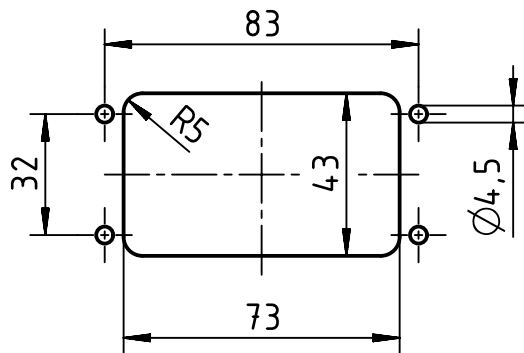



panel cut out (1:2)



	All rights reserved		Scale 1:1		Free size tol.		Ref.		
	Department EL PD		Created by WENE	Inspected by LUOK	Standardisation RUETERA	Date 2020-07-13	State Final Release		
HARTING Electric GmbH & Co. KG D-32339 Espelkamp			Title Han 10M HBM-Rear Fit-SL				Doc-Key / ECM-Nr. 100869912/UGD/002/B 500000176243		
			Type TB	Number 09 37 010 0397			Rev. B	Page 1/1	